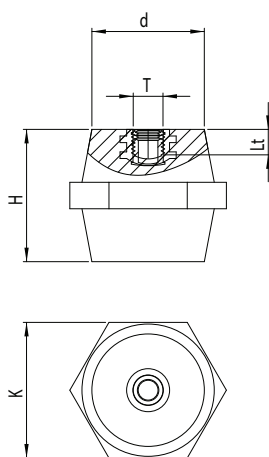


BMC SPACING INSULATORS

| Code | dimensions mm. | | | | Vn AC/DC Volt | packaging pcs |
|-----------------|----------------|--------|-----------------|----|------------------|------------------|
| | H | K | T | Lt | | |
| IPM 20 M(T)-19 | 20 | hex 19 | M4 - M5 M6-M8 | 5 | 600 | 50 |
| IPM 25 M(T)-19 | 25 | hex 19 | M4 - M5 M6-M8 | 8 | 600 | 50 |
| IPM 30 M(T)-30 | 30 | hex 30 | M6-M8 M10-M12 | 9 | 750 | 50 |
| IPM 35 M(T)-32 | 35 | hex 32 | M6-M8 M10-M12 | 11 | 750 | 50 |
| IPM 36 M(T)-41 | 36 | hex 41 | M6-M8 M10-M12 | 11 | 1.000 | 25 |
| IPM 40 M(T)-32 | 40 | hex 32 | M6-M8 M10-M12 | 11 | 1000 | 25 |
| IPM 40 M(T)-46 | 40 | hex 46 | M6-M8 M10-M12 | 11 | 1.000 | 25 |
| IPM 45 M6(T)-36 | 45 | hex 36 | M6-M8 M10-M12 | 15 | 1.000 | 25 |
| IPM 45 M(T)-46 | 45 | hex 46 | M6-M8 M10-M12 | 15 | 1.000 | 25 |
| IPM 50 M(T)-36 | 50 | hex 36 | M6-M8 M10-M12 | 15 | 1500 | 25 |
| IPM 50 M(T)-50 | 50 | hex 50 | M6-M8 M10-M12 | 15 | 1.500 | 25 |
| IPM 55 M(T)-55 | 55 | hex 55 | M6-M8 M10-M12 | 15 | 1.500 | 25 |
| IPM 60 M(T)-55 | 60 | hex 55 | M6-M8 M10-M12 | 15 | 1.500 | 10 |
| IPM 63 M(T)-41 | 63 | hex 41 | M6-M8 M10-M12 | 15 | 1.500 | 10 |
| IPM 65 M(T)-56 | 65 | hex 56 | M6-M8 M10-M12 | 15 | 2.000 | 10 |
| IPM 70 M(T)-65 | 70 | hex 65 | M6-M8 M10-M12- | 15 | 2.000 | 10 |
| IPM 75 M(T)-50 | 75 | hex 50 | M8 M10- M12-M16 | 15 | 2.000 | 5 |
| IPM 75 M(T)-65 | 75 | oct 65 | M8 M10- M12-M16 | 15 | 2.000 | 5 |
| IPM 80 M(T)-65 | 80 | hex 65 | M8 M10- M12-M16 | 15 | 3.600 | 5 |
| IPM 100 M(T)-65 | 100 | oct 65 | M8 M10- M12-M16 | 15 | 3.600 | 5 |



Polyester resin

Bulk Moulding Compound

Colour

RAL 3002

Glass fiber content

20% (±2%)

Working temperature

-40° C / +110° C

Fire resistance

UL94 Classe V0 3,2 mm

Glow wire GWFI

IEC 60695-2-12

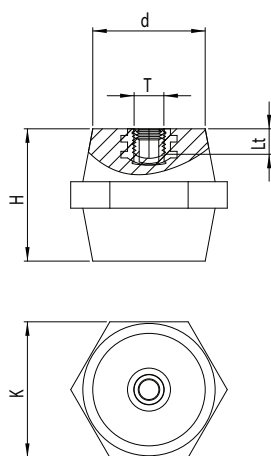
960° C - 2 mm

Arc resistance

ASTM D 495 >180 S

POLYAMIDE SPACING INSULATORS

| Code | dimensions mm. | | | | Vn AC/DC | packaging |
|-----------------|----------------|--------|----------------|-----|----------|-----------|
| | H | K | T | Lt | Volt | pcs |
| IPA 12 M(T)-8 | 12 | hex 8 | M3 | 3,5 | 250 | 100 |
| IPA 15 M(T)-14 | 15 | oct 14 | M4-M5 | 4,5 | 250 | 100 |
| IPA 16 M(T)-14 | 16 | oct 14 | M4-M5 | 4,5 | 250 | 100 |
| IPA 20 M(T)-17 | 20 | hex 17 | M4-M5 M6 | 5 | 400 | 100 |
| IPA 25 M(T)-19 | 25 | hex 19 | M4-M5 M6 | 8 | 600 | 100 |
| IPA 30 M(T)-30 | 30 | hex 30 | M6-M8 M10-M12 | 9 | 750 | 50 |
| IPA 35 M(T)-32 | 35 | hex 32 | M6-M8 M10-M12 | 11 | 750 | 50 |
| IPA 35 M(T)-41 | 35 | hex 41 | M6-M8 M10-M12 | 11 | 1000 | 50 |
| IPA 40 M(T)-32 | 40 | hex 32 | M6-M8 M10-M12 | 11 | 1000 | 50 |
| IPA 40 M(T)-46 | 40 | hex 46 | M6-M8 M10-M12 | 11 | 1000 | 25 |
| IPA 45 M(T)-41 | 45 | oct 41 | M6-M8 M10-M12 | 15 | 1000 | 25 |
| IPA 45 M(T)-46 | 45 | hex 46 | M6-M8 M10-M12 | 15 | 1000 | 25 |
| IPA 50 M(T)-36 | 50 | hex 36 | M6-M8 M10-M12 | 15 | 1500 | 25 |
| IPA 50 M(T)-50 | 50 | hex 50 | M6-M8 M10-M12 | 15 | 1500 | 25 |
| IPA 55 M(T)-55 | 55 | hex 55 | M6-M8 M10-M12 | 15 | 1500 | 25 |
| IPA 60 M(T)-54 | 60 | oct 54 | M8-M10 M12 | 15 | 1500 | 10 |
| IPA 63 M(T)-41 | 63 | hex 41 | M8-M10 M12 | 15 | 1500 | 10 |
| IPA 75 M(T)-50 | 75 | hex 50 | M8-M10 M12-M16 | 15 | 2000 | 10 |
| IPA 100 M(T)-65 | 100 | oct 65 | M8-M10 M12-M16 | 15 | 3600 | 5 |



Polyamide 6

Colour

RAL 3003

Fibers content

30% ($\pm 2\%$)

Working temperature

$-40^{\circ}\text{C} / +120^{\circ}\text{C}$

Fire resistance

UL94 Classe V0 3,2 mm

Glow wire GWF1

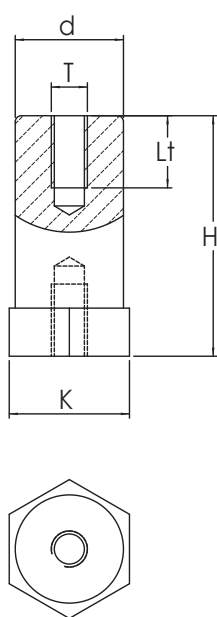
IEC 60695-2-12
 $960^{\circ}\text{C} - 2\text{ mm}$

Arc resistance

ASTM D 495 $>180\text{ S}$

BMC SPACING COLUMNS

| Code | dimensions mm. | | | | Vn AC/ DC Volt | packaging pcs |
|----------------|----------------|--------|-------------|-----|----------------------|------------------|
| | H | K | T | Lt | | |
| CPM 16 M(T)-20 | 16 | hex 20 | M4-M5 M6-M8 | 4,5 | 400 | 100 |
| CPM 20 M(T)-20 | 20 | hex 20 | M4-M5 M6-M8 | 5 | 600 | 100 |
| CPM 25 M(T)-20 | 25 | hex 20 | M5-M6 -M8 | 8 | 600 | 100 |
| CPM 30 M(T)-20 | 30 | hex 20 | M5-M6 -M8 | 9 | 600 | 100 |
| CPM 35 M(T)-20 | 35 | hex 20 | M5-M6 -M8 | 9 | 600 | 100 |
| CPM 40 M(T)-20 | 40 | hex 20 | M5-M6 -M8 | 9 | 600 | 100 |
| CPM 45 M(T)-20 | 45 | hex 20 | M5-M6 -M8 | 9 | 600 | 100 |
| CPM 50 M(T)-20 | 50 | hex 20 | M5-M6 -M8 | 9 | 750 | 100 |
| CPM 55 M(T)-20 | 55 | hex 20 | M5-M6 -M8 | 9 | 750 | 100 |
| CPM 60 M(T)-20 | 60 | hex 20 | M5-M6 -M8 | 9 | 750 | 100 |
| CPM 65 M(T)-20 | 65 | hex 20 | M5-M6 -M8 | 9 | 750 | 100 |
| CPM 70 M(T)-20 | 70 | hex 20 | M5-M6 -M8 | 9 | 750 | 100 |



Polyester resin

Bulk Moulding Compound

Colour

RAL 3002

Glass fiber content

20% (±2%)

Working temperature

-40° C / +110° C

Fire resistance

UL94 Classe V0 3,2 mm

Glow wire GWFI

IEC 60695-2-12

960° C - 2 mm

Arc resistance

ASTM D 495 >180 S

POLYAMIDE SPACING COLUMNS

| Code | dimensions mm. | | | | Vn AC/ DC | packaging |
|----------------|----------------|--------|-------------------|----|--------------|-----------|
| | H | K | T | Lt | Volt | pcs |
| CPA 30 M(T)-30 | 30 | hex 30 | M6-M8 M10-M12 | 9 | 750 | 25 |
| CPA 35 M(T)-30 | 35 | hex 30 | M6-M8 M10-M12 | 11 | 750 | 25 |
| CPA 40 M(T)-30 | 40 | hex 30 | M6-M8 M10-M12 | 11 | 1.000 | 25 |
| CPA 45 M(T)-30 | 45 | hex 30 | M6-M8 M10-M12 | 15 | 1.000 | 25 |
| CPA 50 M(T)-30 | 50 | hex 30 | M6-M8 M10-M12 | 15 | 1.500 | 25 |
| CPA 55 M(T)-30 | 55 | hex 30 | M6-M8 M10-M12 | 15 | 1.500 | 25 |
| CPA 60 M(T)-30 | 60 | hex 30 | M6-M8 M10-M12 | 15 | 1.500 | 25 |
| CPA 65 M(T)-30 | 65 | hex 30 | M6-M8 M10-M12 | 15 | 1.500 | 25 |
| CPA 70 M(T)-30 | 70 | hex 30 | M6-M8 M10-M12 | 15 | 1.500 | 25 |
| CPA 30 M(T)-41 | 30 | hex 41 | M6-M8 M10-M12 | 9 | 750 | 25 |
| CPA 35 M(T)-41 | 35 | hex 41 | M6-M8 M10-M12 | 11 | 750 | 25 |
| CPA 40 M(T)-41 | 40 | hex 41 | M6-M8 M10-M12 | 11 | 1.000 | 20 |
| CPA 45 M(T)-41 | 45 | hex 41 | M6-M8 M10-M12 | 15 | 1.000 | 20 |
| CPA 50 M(T)-41 | 50 | hex 41 | M6-M8 M10-M12 | 15 | 1.500 | 20 |
| CPA 55 M(T)-41 | 55 | hex 41 | M6-M8 M10-M12 | 15 | 1.500 | 20 |
| CPA 60 M(T)-41 | 60 | hex 41 | M6-M8 M10-M12 | 15 | 1.500 | 20 |
| CPA 65 M(T)-41 | 65 | hex 41 | M6-M8 M10-M12 | 15 | 1.500 | 20 |
| CPA 70 M(T)-41 | 70 | hex 41 | M6-M8 M10-M12 M16 | 15 | 1.500 | 20 |

Polyamide 6

Colour RAL 3003

Fibers content 30% ($\pm 2\%$)

Working temperature
-40° C / +120° C

Fire resistance
UL94 Classe V0 3,2 mm

Glow wire GWFI IEC 60695-2-12
960° C - 2 mm

Arc resistance
ASTM D 495 >180 S

